

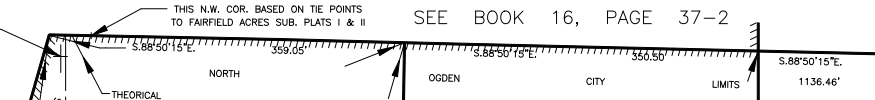
PART OF N.E. 1/4 OF SECTION 29, T.7N., R.1W., S.L.B.&M.

IN NORTH OGDEN CITY & NORTH OGDEN DISTRICT

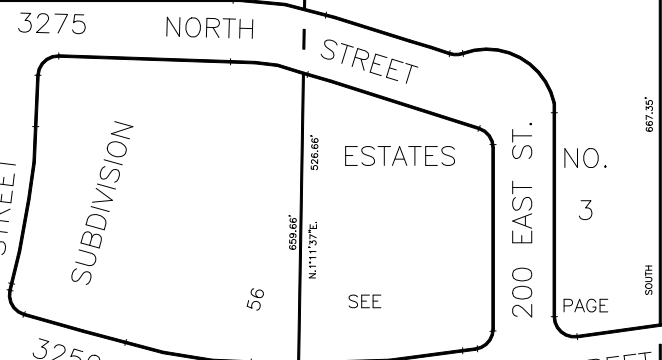
SCALE 1" = 100'

TAXING UNIT: 03, 10

NOTE: THIS N.W. COR. BASED ON TIE POINTS TO HILLTOP SUB. 8 DEBLOUIS SUB.

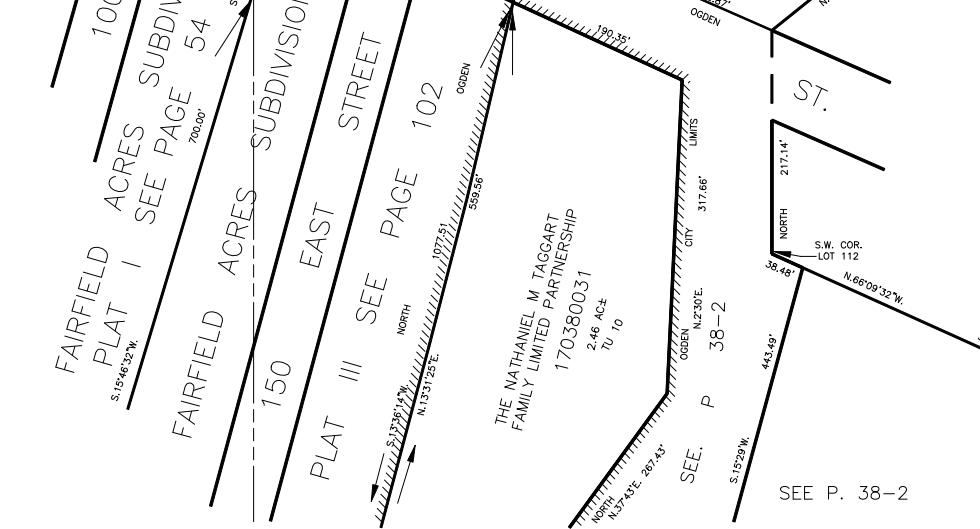
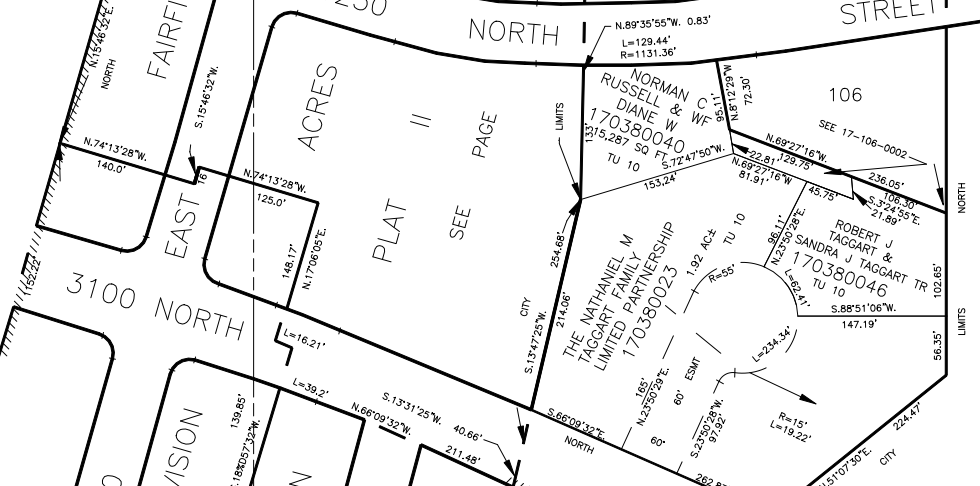


SEE BOOK 16, PAGE 37-2



SEE PAGE 43

MT. LOMOND ESTATES NO. 2



SEE PAGE 44

10' UTILITY & DRAINAGE EASEMENTS EACH SIDE OF PROPERTY LINES AS INDICATED BY DASHED LINES EXCEPT AS OTHERWISE SHOWN.

FOR COMPLETE ENG DATA SEE ORIGINAL DEDICATION PLAT IN BOOK 16, PAGE 37-2 OF RECORDS.

SEE P. 38-2

379.91'